

# *perspectives*

## CHELTENHAM ARTS CULTURE

*Cheltenham Arts Council: awards\_funding\_publicity\_events listings*

**CHELTENHAM OPEN STUDIOS  
PLUS: SUMMER FESTIVALS · THE PLAYHOUSE AT 70 · ART PLAYGROUND**

*June - September 2015*

**30 JUNE - 11 JULY 2015**  
**BOX OFFICE 0844 880 8094**  
**CHELTENHAMFESTIVALS.COM**

featuring

**ERIC WHITACRE ALINA IBRAGIMOVA PSYCHO LIVE!**  
**EDWARD GARDNER NEW ENGLISH BALLET THEATRE**  
**FRANK SINATRA'S 'CLOSE TO YOU' MAHLER'S 3RD**  
**22 PREMIERES BORIS GILTBURG SARAH CONNOLLY**  
**MARC-ANDRÉ HAMELIN THE KING'S SINGERS**  
**KATHRYN TICKELL JEAN-GUIHEN QUEYRAS**  
**TANGO STORIES WITH KSENIJA SIDOROVA**  
**GABRIELA MONTERO**  
**CBSO MAHAN ESFAHANI**

and much more...



**"Concert-going doesn't get much more feel-good than this"**

Charity No. 251765

BBC Music Magazine

CONTENTS

THE PLAYHOUSE	2
ART PLAYGROUND	4
LISTINGS	6
CHELTENHAM'S ARTISTS IN THEIR OWN WORDS	11
INFINITE CURIOSITY: SCIENCE FESTIVAL	12
MUSIC FESTIVAL HIGHLIGHTS	13

*Get creative this summer*

It's no secret that Cheltenham punches above its weight when it comes to the arts. We're lucky to have such breadth and quality of cultural activity. But us Cheltenham folk are not content being mere consumers, happy to spectate and observe other people's talent and flair. We want a piece of the action too!

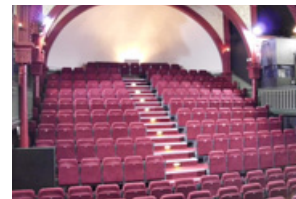
This issue reflects some of the ways in which local people - including many Cheltenham Arts Council members - are getting creative this summer.

*... taking part in the arts is beneficial to your health and happiness.*



COVER: PETER GRANVILLE-EDMUNDS 'LE BATON'

Cheltenham Open Studios takes place mid-June, with nearly 200 artists throwing open their studio doors. The front cover image by Peter Granville-Edmunds is a wonderful sneak preview of the art created right here on our doorsteps. We interview social entrepreneur, Christina Poulton, whose participatory workshops during Open Studios are your chance to create new art and be part of the fun.



PLAYHOUSE AUDITORIUM

Cheltenham Music Festival director, Meurig Bowen, gives us a taster of July's impressive programme and shows us that, alongside some of the world's finest musicians, the annual Festival is also a great opportunity for local performers.

And we delve into the history and photographic archives of The Playhouse theatre, the home of Cheltenham's lively amateur dramatic community since 1945.

There is growing evidence that taking part in the arts is beneficial to your health and happiness. If you're not already joining in, I hope you find inspiration in these pages! Do get in touch if you'd like to comment or contribute: [editor@cheltenhamartscouncil.co.uk](mailto:editor@cheltenhamartscouncil.co.uk)

Hollie Smith-Charles



PERSPECTIVES TEAM

EDITOR HOLLIE SMITH-CHARLES  
 LISTINGS ALICE HOODSON  
 TEMPLATE DESIGN CHANTAL FREEMAN

COVER PETER GRANVILLE-EDMUNDS

*Perspectives is produced three times a year. The next issue will span October 2015 - January 2016.*

SUBMISSION (ADS AND EVENTS) MUST BE WITH US BY THE END OF JULY FOR CONSIDERATION FOR THE NEXT ISSUE. PLEASE EMAIL EVENT DETAILS TO [PERSPECTIVES.LISTINGS@GMAIL.COM](mailto:PERSPECTIVES.LISTINGS@GMAIL.COM)

## LET'S GO ON WITH THE SHOW

### CELEBRATING 70 YEARS OF CHELTENHAM'S PLAYHOUSE BY PAUL SCOTT, THEATRE MANAGER

Seventy years ago, on Thursday 9 April 1945, the curtain rose on the first ever performance at Cheltenham's new Civic Playhouse. It was George Bernard Shaw's *Arms & The Man* and it elicited a telegram of congratulation from the playwright himself.

The building dates much further back and has an important place in the history of Cheltenham, having been erected by Henry Thompson in 1806 for the manufacture of "The Real Cheltenham Salts", taken for medicinal purposes. There were also five baths of various sizes, expanded to nine by 1818.

The premises underwent many developments throughout the 19th Century, with the addition of a sizeable swimming pool, showers, air, steam and vapour baths, plus its own steam mill and bakery from the 1830s until the 1860s.

The Montpellier Baths reopened in September 1900 after another major refurbishment, having been purchased by the Corporation of Cheltenham in 1899.



IMAGES FROM THE FIRST EVER PLAYHOUSE PRODUCTION IN 1945



The council added slipper and medicinal baths in the area now used as the green room and rehearsal rooms. The main pool (still in existence under the auditorium!) could be covered over to enable gymnasium classes and cycling lessons and, in later years, the baths played host to exhibitions, dances, fancy dress balls and a variety of competitions.

During WWII, the Baths were closed to become an ARP Centre and local host of St John's Ambulance.

Discussions and calls for a home for local amateur theatre began in 1944 and the swimming pool section of Montpellier Baths was deemed to be a suitable venue, one that would not cost too much to convert.



BALCONIES, AS PICTURED IN THE LAST CENTURY PRIOR TO CHANGE OF USE TO CIVIC PLAYHOUSE.



TRANSFORMATION FROM SWIMMING POOL (1806-1818) AND BATHS TO THE AUDITORIUM AS WE KNOW IT TODAY, DEVELOPED IN THE LAST CENTURY.

The town council established and financed the theatre until 1957, when local volunteers took over its running under the guide of the Theatre & Arts Club. It is still run by volunteers to this day and has been a registered charity since 2001.

Today, as well as being used by many amateur and professional companies – and for its own drama school, which is now in its 30th year – the theatre hosts everything from parent and toddler groups to dance, language and music lessons. It also hosts, of course, Cheltenham Arts Council's annual award presentation!

Aside from a grant of £5,699 from the Borough Council, the Playhouse is entirely self-financing. It hopes to use its 70th anniversary as a springboard to attract more volunteers to play an active part in its presentations as well as raising funds to make more improvements and maintain the fabric of this fascinating Grade-II listed venue.



PHOTO: PAUL SCOTT

To find out more about getting involved and supporting the Playhouse 70th Anniversary campaign, visit [www.cheltplayhouse.org.uk](http://www.cheltplayhouse.org.uk) or call the Box Office on 01242 522852.

## COME AND PLAY

### AN INTERVIEW WITH CHRISTINA POULTON, ART PLAYGROUND BY HOLLIE SMITH-CHARLES

Christina Poulton set up Art Playground in 2014 after an inspiring visit to the City Museum in St Louis, Missouri, USA. An eclectic museum-cum-art installation comprising maze-like tunnels, sculpture and curiosities, this grown-up wonderland helped Christina answer a question that had been bugging her for a while: what job would I do if money was no object? (And even though money is an object, could I do it anyway?)

Art Playground was the result. A social enterprise with a creative heart, Christina and her team devise and produce interactive arts projects and places. Their goal is to surprise people and make them go 'wow!' Aimed at adults and children alike, they create art that can be climbed on, they take over public spaces and disused shops for workshops and

exhibitions and seek ways of "un-British-ising people for a little while."

Christina's professional background is in theatre, festivals and youth work, rather than visual arts, and the work she now creates defies the neat boundaries expected of the "arts". When we meet, the team was making plans for an Art Maze at Beechwood Arcade during the Easter holidays. Created via family workshops, an all-ages photography competition, artist commissions and a crowd-funding campaign, it's an ambitious, joyful, lively project quite at odds with Cheltenham's genteel image.

I meet Christina in Art Playground's HQ, a playful office furnished with vintage chairs, china teacups and homemade art, located incongruously on a burly industrial estate behind Cheltenham train station.



PHOTO: TOM TRAVIS

TAKING PART IN A SUMMER 2014 PROJECT



PHOTO: DAVE STOKES

CHRISTINA POULTON

It offers cheap hot-desking for creative freelancers, which in turn complements Art Playground's other mission: to provide support and development for the town's creative community.

This community, feels Christina, could be better supported and nurtured. At the moment, for the majority of Cheltonians, "the arts" means The Everyman and the Festivals. Indeed, a research project at the University of Gloucestershire about the role of culture on 'place-making' in Cheltenham, on which she is jointly working, has shown this to be true. It means, she argues, that we have a gap in the middle between the thriving amateur scene and the high level spectacles.

She is concerned that Cheltenham should make a fuss about emerging artists who are "on the verge of something brilliant." It's a strategic decision: at the moment the

focus of investment is on tourism; instead, there should be more support for a culture of innovation, spaces to show professional work and year-round activity. "I'm creative," she says, "but I'm not an artist. Artists are people who can turn the world on its head."

And so she sees part of Art Playground's role as providing a platform for those who engage in the arts as more than a hobby, supporting those who seek to develop their skills, take risks, grow as artists and, in turn, shape the creative landscape of Cheltenham.

In June, Art Playground bring together these strands - linking professional artists and an unsuspecting public - with their contribution to Cheltenham Open Studios:

#### **FREE Family art workshops at Glenfall Primary School:**

Sat 13 June, 10am - 3pm

#### **FREE after-school workshops at The Wilson:**

Tue 16 June, 3:30 - 5pm

*It's open to everyone, of course -  
do join in!*



PHOTO: DAVE STOKES

FOR MORE DETAILS ON THE CHELTENHAM OPEN STUDIOS ART TRAIL AND ALL OTHER EVENTS PLEASE VISIT:  
[CHELTENHAMOPENSTUDIOS.ORG.UK](http://CHELTENHAMOPENSTUDIOS.ORG.UK)

## EVENTS FOR JULY – SEPTEMBER 2015

## VISUAL ARTS

**New Acquisitions Exhibition**

Tue-Sat 10am-5pm, Sun 1.30-5pm, £5/£2, Holst Birthplace Museum, holstmuseum.org.uk

**Cheltenham Open Studios (COS15)** Sat 13 - Sun 21 June visit studios, workrooms and exhibitions of 200+ local artists across 65 venues. See The Wilson Tourist Info Centre or cheltenhamopenstudios.org.uk for venue guide.

**Art in the Park** Sat 20 June-Sun 19 July, 10am-7.30pm, Imperial Gardens, diverse selection of affordable local art.

**Craft Drop-in: Eton Collars & Mob Caps** Tue 28 July, 10.30am-3pm, £5, children free with paying adult, Holst Birthplace Museum, make your own Victorian hat to wear home.

**Craft Drop-in: Peg Dolls** Tue 4 Aug, 10.30am-3pm, £5, children free with paying adult, Holst Birthplace Museum, make your own toy.

**Craft Drop-in: Postcards & Sandcastles** Tue 11 Aug, 10.30am-3pm, £5, children free with paying adult, Holst Birthplace Museum, play in our Bathtub Sandpit and make a postcard souvenir.

**Craft Drop-in: Toy Theatre** Tue 18 Aug, 10.30am-3pm, £5, children free with paying adult, Holst Birthplace Museum, make your own Victorian toy.



BIBBY ZINRAM, COS15  
SEE CHELTENHAMOPENSTUDIOS.ORG.UK

**Craft Drop-in: Victorian Holiday Scrapbooking** Tue 25 Aug, 10.30am-3pm, £5, children free with paying adult, Holst Birthplace Museum, bring your photos to make a scrapbook.

**Cheltenham Camera Club Exhibition** Fri 11- Mon 14 Sept, Town Centre, local images celebrating the club's 150th anniversary and Heritage Open Days. cheltenhamcameraclub.co.uk

### AT THE GARDENS GALLERY, MONTPELLIER GARDENS:

10am-5pm daily, as listed:

**Nicki Gwynn-Jones** Wed 27 May - Tue 2 June fine art photography.

**The Wilson** Wed 3 - Tue 9 June.

**Cheltenham Open Studios Venue no 1** Wed 10 - Tue 23 June cheltenhamopenstudios.org.uk

**Mark Setchell**, Wed 24 June - Tue 7 July, minimalist black & white landscape photography.

**Four Painters** Wed 8 - Tue 14 July, Carole Austen, Diane Chipperfield, Pauline Hutchison, Keith Davis.

**Leanne Courtney-Crowe, Patricia Courtney & Sue Jolley** Wed 15 - Tue 21 July, art inspired by nature, abstract, still life, oils, mixed media & pencil.

**The Wednesday Group** Wed 22 - Tue 28 July, watercolours.

**Amy Farrer** Wed 29 July-Tue 4 Aug, landscapes & figurative oil paintings.

**Niki & Lee Crew** Wed 5 - Tue 11 Aug, paintings, prints, glass.

**Catherine Dowell** Wed 12-Tue 18 Aug.

**Kate Dove** Wed 19 - Tue 25 Aug.

**Rupert Aker** Wed 26 Aug-Tue 1 Sept oil paintings of Cotswold landscapes.



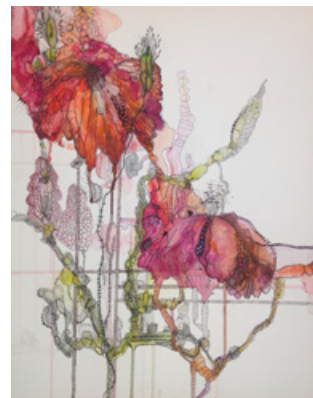
HILARY DAVIS, COS15  
SEE CHELTENHAMOPENSTUDIOS.ORG.UK

## EVENTS FOR JULY – SEPTEMBER 2015

**Adele Lambert & Alice Adams** Wed 2 - Tue 8 Sept.

**Gill Evans & P.M. Ryland** Wed 9 - Tue 15 Sept.

**Cheltenham Camera Club**, Wed 16- Tue 22 Sept a celebration of members' images for sale in aid of charity.



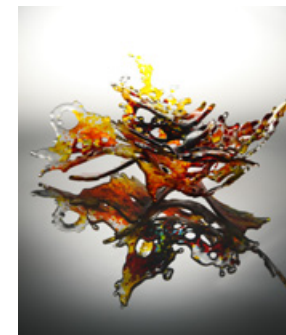
JAYNIE RANGER, COS15  
SEE CHELTENHAMOPENSTUDIOS.ORG.UK

## MUSIC

**Blue Moon Harmony Rehearsals** every Thu, 7.30pm Bishop's Cleeve Primary School, friendly mixed chorus recruiting new members. Tel. 01242 251531

**The Arthur Bliss Society Lunch, AGM & Free Concert** Sat 13 June, 1-6pm St Andrew's Church, Montpellier, Elgar & Bliss. Tel. 01242 522763

**Cleeve Harmony at the Bishop's Cleeve Street Fair** Sun 14 June see cleeve-harmony.org.uk



LOIS PARKER, COS15  
SEE CHELTENHAMOPENSTUDIOS.ORG.UK

**Cheltenham Bach Choir** Sun 14 June, 7.30pm Pittville Pump Room, with Chelt Youth Choir and Regency Percussion Ensemble. Orff: Carmina Burana, Salzedo: Arioso & Scherzo, Dove: The Passing of the Year

**Blue Moon Harmony, Music for a Summer Evening** Sat 20 June, 7.30pm, £7.50, inc refreshments, St Margaret's Hall, Hatherley, tickets in aid of Cystic Fibrosis, tel. 01242 523689

**Cheltenham Philharmonic Orchestra with Joanna MacGregor** Sun 21 June, 3pm, £15, Pittville Pump Room, Britten: Piano Concerto, Four Sea Interludes, Gurney: Gloucestershire Rhapsody

**Cheltenham Music Festival** Tue 30 June- Sat 11 July cheltenhamfestivals.com/music

**Churchdown Male Voice Choir** Sat 4 July, 7.30pm, £8, All Saints' Church, concert in support of LINC & Cobalt Unit

**Cleeve Chorale Summer Concert** Sat 4 July, Bishop's Cleeve Tithe Barn,

**Musica Vera, Music for a Summer Evening** Sat 4 July, 7.30pm, £10, u-16 free, St Peter's Church, Leckhampton, Madrigals and Folksongs with Major Pipework, proceeds to charity

**Cheltenham Recorded Music Society Summer Meeting** Mon 6 July further details: Jenny Buckland 01242 582470

**Cheltenham Symphony Orchestra, The Bard at Bredon** Sat 11 July, 7.30pm Bredon Village Hall, Shakespeare themed music from Finzi, Walton, Mendelssohn & Olson

**Churchdown Male Voice Choir** Sat 11 July, 7.30pm, £8, Salvation Army Hall, Gloucester, concert in support of Guide Dogs for the Blind

**Churchdown Male Voice Choir** Sat 15 Aug, 7.30pm, £8, St Barnabas Church, concert in support of Alzheimer's Society

**Cheltenham Chamber Orchestra** Sat 26 Sept, 7.30pm St Andrew's Church, Montpellier, Valedictory for Peter Tomlinson with music by Delius, Brahms and John Frith (premiere).

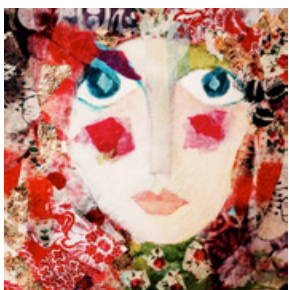
## EVENTS FOR JULY – SEPTEMBER 2015

## STAGE &amp; DANCING

**The Cotswold Savoyards: HMS Pinafore + Cox & Box**, Tue 9- Sat 13 June, 7.30pm & 2pm Sat mat, £13-19 (£10 u-18), The Everyman, 01242 572573

**Promenade Productions Present: CHESS The Musical**, Wed 8- Sat 11 July, 7.30pm, £12-16, Bacon Theatre, lyrics by Tim Rice, music by ABBA's Benny & Bjorn. Tel. 01242 258002

**The Cotswold Savoyards: 'Follies' pre-audition rehearsals**, 7,9,14 & 16 July, 7.30pm Charlton Kings Infants' School, Stephen Sondheim show to run in Nov. See [cotswoldsavoyards.org](http://cotswoldsavoyards.org)



PASCALÉ, COS15  
SEE [CHELTENHAMOPENSTUDIOS.ORG.UK](http://CHELTENHAMOPENSTUDIOS.ORG.UK)

**Royal Scottish Country Dance Society Open Evening** Thu 3 Sept, 7.15pm, free event, Bettridge School, for beginners or more experienced dancers. Details: [cheltenhamscds.btck.co.uk](http://cheltenhamscds.btck.co.uk)

**Royal Scottish Country Dance Society Beginners Class**, Mon 14 Sept, 7.45pm Reddings Community Centre, start of new season. Details: [cheltenhamscds.btck.co.uk](http://cheltenhamscds.btck.co.uk)

## LECTURES &amp; MEETINGS

**Cheltenham German Club Stammtisch** twice a month, town centre, for details: [cheltenhamgermanclub.webs.com](http://cheltenhamgermanclub.webs.com) or Greg Arnold 01684 772966

**Cheltenham WEA Walking Book Group** monthly, 2-4pm Pittville Park, visit [wea-cheltenham.co.uk](http://wea-cheltenham.co.uk) for details

**Cheltenham Science Festival** Tue 2- Sun 7 June, [cheltenhamfestivals.com/science](http://cheltenhamfestivals.com/science)

**Cheltenham Poetry Society Workshop** Tue 2 June, 7-10pm, £5 (£3 subscribers), Parmoor House, Lypiatt Terrace, info: Sharon Larkin 07540 329389

**Tea & Talk: Mary Seacole, a Jamaican Nurse in the Crimean War** Wed 3 June, 3.30pm, £20, 70 Brooklyn Road, GL51 8DU, with Tom James, fundraising for Victoria County History, Cheltenham. Info: Sally Self 01242 243714

**Conference: New Numbers: New Approaches, The Dymock Poets** Sat 6- Sun 7 June £33-40, Francis Close Hall Campus & Dymock village, formal presentations, innovative

performances and guided walks of the village that inspired the authors. Book: <http://store.glos.ac.uk>. Contact [humanities@glos.ac.uk](mailto:humanities@glos.ac.uk)

**Cheltenham Writers' Circle** Mon 8 June, 7.30pm, £2, Parmoor House, Lypiatt Terrace, encouraging creative writing at all levels. Theme: Frazzled

**Civic Society, Hartlebury Castle & the Hurd Library** Tue 9 June, trip to Worcestershire. See [cheltenhamcivicsociety.org.uk](http://cheltenhamcivicsociety.org.uk) for details & booking.

**Cheltenham Poetry Society Reading Group Meeting** Tue 16 June, 7-10pm, £3, Parmoor House, Lypiatt Terrace, info: Sharon Larkin 07540 329389.

**Cheltenham Civic Day** Sat 20 June, celebrating where we live and volunteering. See [cheltenhamcivicsociety.org.uk](http://cheltenhamcivicsociety.org.uk)

**Cheltenham Writers' Circle** Mon 22 June, 7.30pm, £2, Parmoor House, Lypiatt Terrace, encouraging creative writing at all levels. Theme: Magna Carta or Waterloo.

**Prestbury Local History Society History Walk** Mon 22 June, with David Jones, see [prestburyhistory.com](http://prestburyhistory.com) for details.

**Tea & Talk: Discovering Old Music in the Archives** Wed 1 July, 3.30pm, £20, 70 Brooklyn

## EVENTS FOR JULY – SEPTEMBER 2015

Road, GL51 8DU, with Heather Forbes, County Archivist. Fundraising for Victoria County History, Cheltenham. Info: Sally Self 01242 243714.

**Cheltenham Writers' Circle** Mon 6 July, 7.30pm, £2, Parmoor House, Lypiatt Terrace, encouraging creative writing at all levels. Theme: The Negotiation Game.

**Civic Society, History & Development of Railings** Tue 7 July, 7pm, £4 (£2 members), Parmoor House, Lypiatt Terrace, with Sarah Baines, Conservation Officer, Oxford.

**Cheltenham Writers' Circle** Mon 20 July, 7.30pm, £2, Parmoor House, Lypiatt Terrace, encouraging creative writing at all levels. Theme: My Gang.

**Cheltenham Poetry Society Reading Group Meeting** Tue 21 July, 7-10pm, £3, Parmoor House, Lypiatt Terrace, info: Sharon Larkin 07540 329389.



DINNY POCOCK, COS15  
SEE [CHELTENHAMOPENSTUDIOS.ORG.UK](http://CHELTENHAMOPENSTUDIOS.ORG.UK)



NICKI GWYNN JONES, COS15 SEE [CHELTENHAMOPENSTUDIOS.ORG.UK](http://CHELTENHAMOPENSTUDIOS.ORG.UK)

**Cheltenham Writers' Circle** Mon 3 Aug, 7.30pm, £2, Parmoor House, Lypiatt Terrace, encouraging creative writing at all levels. Theme: Picture in the Attic.

**Cheltenham Writers' Circle** Mon 17 Aug, 7.30pm, £2, Parmoor House, Lypiatt Terrace, encouraging creative writing at all levels. Theme: Knight of the Road.

**Cheltenham Poetry Society Reading Group Meeting** Tue 18 Aug, 7-10pm, £3, Parmoor House, Lypiatt Terrace, info: Sharon Larkin 07540 329389.

**Cheltenham Writers' Circle** Mon 31 Aug, 7.30pm, £2, Parmoor House, Lypiatt Terrace, encouraging creative writing at all levels. Presentation: TBC.

**Cheltenham Poetry Society Workshop** Tue 1 Sept, 7-10pm, £5 (£3 subscribers), Parmoor House, Lypiatt Terrace, info: Sharon Larkin 07540 329389.

**Heritage Open Days** Thu 10- Sun 13 Sept events around town and see [cheltenhamcivicsociety.org.uk](http://cheltenhamcivicsociety.org.uk)

**Cheltenham Writers' Circle** Mon 14 Sept, 7.30pm, £2, Parmoor House, Lypiatt Terrace, encouraging creative writing at all levels. Theme: It's All Right Now.

**Cheltenham Poetry Society Reading Group Meeting** Tue 15 Sept, 7-10pm, £3, Parmoor House, Lypiatt Terrace, info: Sharon Larkin 07540 329389.

**Cheltenham Local History Society, Chedworth Roman Villa** Tue 15 Sept, 7.30pm Council Chamber, Municipal Offices, with Nick Humphris.

**Cercle Français** Mon 21 Sept, 7 for 7.30pm Church House, Painswick Road, détails à suivre, [cercle-francais-cheltenham.webs.com](http://cercle-francais-cheltenham.webs.com)

## EVENTS FOR JULY – SEPTEMBER 2015



CAMILLA WARD  
SEE CHELTENHAMOPENSTUDIOS.ORG.UK

**Historical Association, The History of Allotments,** Mon 21 Sept, 7.30pm, £3 visitors, Teaching Centre, Park Campus, with John Loosley.

**Charlton Kings Local History Society, VADs in Cheltenham,**

Tue 22 Sept, 7.30pm Baptist Church, Charlton Kings, with Geoff North.

**Cheltenham Writers' Circle,** Mon 28 Sept, 7.30pm, £2, Parmoor House, Lypiatt Terrace, encouraging creative writing at all levels. Theme: Hot Air.

**Prestbury Local History Society, The Craven's Influence in Prestbury,** Mon 28 Sept, 7.30pm, W.I. Hall, Prestbury, with Val Porter.



CARERS GLOUCESTERSHIRE  
SEE CHELTENHAMOPENSTUDIOS.ORG.UK

### CHELTENHAM WEA COURSE LISTINGS:

Further details  
wea-cheltenham.co.uk or  
Derek Briggs 01242 234488.

Please enrol online:  
wea.org.uk or  
tel. 0845 458 2758

**Exploring Drawing,**  
Mon 21 Sept- Mon 9 Nov  
(ex.26 Oct), 10.30am  
-12.30pm, £56, The Wilson.

**Literature & Social History:  
the Early 1950s,** Tue 22  
Sept- Tue 1 Dec (ex.27 Oct),  
10.30am-12.30pm, £84,  
Christ Church Hall.

**Poetry Through the Ages:  
7 Great Poets,**  
Wed 23 Sept- Wed 11 Nov  
(ex.21 Oct), 2-4pm, £56,  
Christ Church Hall.

**Further your French with  
Fun,** Thu 24 Sept - Thu 10  
Dec (ex.29 Oct), 2-4pm, £88,  
Christ Church Hall.

**Bad Science, Bad  
Philosophy,** Thu 1 Oct -  
Thu 19 Nov (ex.29 Oct),  
2-4pm, £56, St Mark's  
Methodist Church Hall.

**Floristry,** Mon 5 Oct - Mon  
23 Nov (ex.26 Oct), 2-4pm,  
£56, St Mark's Methodist  
Church Hall.

**American Civil Rights,**  
Fri 9 Oct- Fri 20 Nov,  
11am-1pm, £56, Christ  
Church Hall.

**Calligraphy Day School,**  
Sat 10 Oct, 10am-4pm,  
£30, St Mark's Methodist  
Church Hall, with Andy

More from the Guild of  
Gloucestershire Craftsmen.

### BOOK AHEAD FOR:

**The British Association  
of Friends of Museums  
(BAFM) Conference**

Fri 16 – Sun 18 Oct,

Does the past have a  
future? Engaging the next  
generation.

Hosted by the Friends  
of The Wilson and the  
Holst Birthplace Trust,  
this three-day event will  
bring heritage, museum  
and art lovers from  
across the country here to  
Cheltenham.

There is a packed  
programme of events,  
including an after-dinner  
speech from historian  
and broadcaster Peter  
Hennessy.

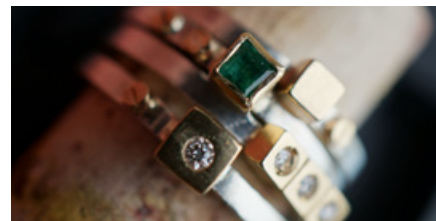
Find out more by email:  
conference@fcagm.org.uk  
or visit [www.bafm.org.uk](http://www.bafm.org.uk)

SUBMISSION (ADS AND EVENTS) MUST  
BE WITH US BY THE END OF JULY FOR  
CONSIDERATION FOR THE NEXT ISSUE.  
PLEASE EMAIL EVENT DETAILS TO  
[PERSPECTIVES.LISTINGS@GMAIL.COM](mailto:PERSPECTIVES.LISTINGS@GMAIL.COM)

## CHELTENHAM'S ARTISTS IN THEIR OWN WORDS

### A GLIMPSE INTO THE CREATIVE PROCESS WITH CHELTENHAM OPEN STUDIOS

Cheltenham Open Studios, a biennial celebration of visual art, has been described by artist and COS Patron PJ Crook as, "a rare opportunity to glimpse at that intriguing relationship – the creative process and the diverse environments in which it occurs." When it started, in 2001, just 46 artists took part; in 2013, the last time the event was staged, over 11,000 people visited the studios, workrooms and exhibition spaces of over 200 artists working in Cheltenham and its surrounds. Now an important part of the town's cultural landscape, we asked three participants to tell us more about what COS15 means to them.



### LAURE FILHO

#### JEWELLER

I am both an artist (jeweller) and an art lover living in Cheltenham. This is my fourth year as a member of COS and I can't praise it enough. From an artist's perspective, COS allows us to showcase work with no limitations to a varied audience. It enables us to engage with each visitor and to explain the work and inspiration behind each piece, which often puts forward a whole new perspective. From an art lover's point of view, it is a fantastic way to buy, view and engage with art. COS brings art to the people and people to the artists, it's brilliant.

### PETER GRANVILLE-EDMUNDS

#### PAINTER (FRONT COVER)

I really enjoy the COS week. Although necessary for one's artistic practice, working as an artist can be quite isolating at times, so it's a pleasure to be able to meet people who are genuinely interested in what I do as I work in the studio. It's a very social event. People treat it like a day out, moving from venue to venue. I've had families stay and sit on the lawn, eating their packed lunches on lovely warm June days. As such, it is a much more relaxed and informal way of viewing art, and one I would highly recommend.

### NATASHA HOUSEAGO

#### SCULPTOR

As a Cheltenham based professional sculptor it is important to be able to produce new work and show it at COS. As an artist whose passion is residencies in schools and colleges this is a fantastic way to promote my work to new audiences and potentially gain new clients. It can be a lonely profession and COS is a great way to meet and possibly collaborate with other local artists. I'm always keen to take part in this event as I feel the artists and art in Cheltenham are vital to keeping the town a vibrant and exciting place to live.



## INFINITE CURIOSITY

WE ASKED THE TEAM BEHIND CHELTENHAM SCIENCE FESTIVAL TO INTRODUCE THEIR HIGHLIGHTS OF THIS YEAR'S EVENT.

From the Royal Society to Renaissance art, the Science Festival returns in June with a diverse line-up of more than 165 events, including talks from Brian Cox, Steve Backshall, Alice Roberts, Robert Winston and Wilko Johnson.



GORGOSAURUS

Over the course of six days, the Festival aims to inspire, challenge, surprise and entertain. It showcases ground-breaking research, debates big questions and introduces audiences to some of the world's greatest thinkers. Part of the Cheltenham Festivals group, it originally grew out of the Literature Festival and continues to draw on the creative spirit that comes with being part of an 'arts' organisation.

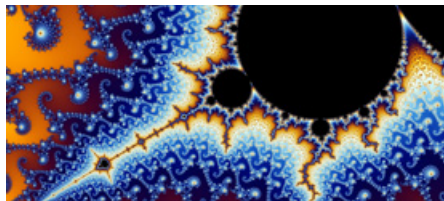
Festival Director Jane Furze said: "The Festival delivers a fantastic programme that engages scientists, science enthusiasts and *anyone* with a curious mind who wants to better understand how the world works. This year we've more to satisfy visitors' curiosity than ever, from dinosaurs and DeLoreans, to the Universe and the science of everyday life."

The pop-up Science Village in Imperial Gardens will feature a brand new DinoZone with a spectacular seven metre skeleton of a Gorgosaurus. Visitors can learn about mass extinctions, discover

what dinosaurs really looked like, meet infamous dino-hunter Pete Larson and get a behind-the-scenes glimpse of *Jurassic World* with Jack Horner, the man who inspired the Alan Grant character in *Jurassic Park*.

Inspiration from the movies continues with an original DeLorean that is being 'flown' in to celebrate the 30th anniversary of *Back to the Future*. The Festival will look at time travel, ask why we don't have flying cars and see what science fiction says about our time.

The Universe is another major theme at this year's Festival. Cheltenham will be exploring the mysteries revealed by the Rosetta mission, discuss if space exploration is worth the money, and there'll be talks from Martin Rees of the Royal Society and Jodrell Bank's Tim O'Brien.



THE BEAUTY OF FRACTALS

Art is also on the bill, with Robert Winston looking at Renaissance medicine in art, Sarah Butterfield investigating the colourful legacy of Impressionism, and in-depth looks at taxidermy, as well as the mathematics of origami and stunning fractals.

THE TIMES CHELTENHAM SCIENCE FESTIVAL RUNS FROM 2-7 JUNE 2015. FIND OUT MORE AT [WWW.CHELTENHAMFESTIVALS.COM](http://WWW.CHELTENHAMFESTIVALS.COM) OR CALL 0844 880 8094.

## MUSIC STARS FROM NEAR AND FAR

CHELTENHAM MUSIC FESTIVAL DIRECTOR, MEURIG BOWEN, INTRODUCES THE LOCAL HIGHLIGHTS OF THIS YEAR'S FESTIVAL

In this soundbite, elevator pitch age, how would I describe in 140 characters the headline elements of my programme for the 2015 Cheltenham Music Festival:

*Dance returns; live soundtrack movie screenings; Paris Visited; 1945 Revisited; Back in The Everyman; 4 nights in CLC's Princess Hall; Diverse!*

I think that's 143 characters actually. You can read all about the riches of this year's programme by looking at [cheltenhamfestivals.com/music](http://cheltenhamfestivals.com/music). As they used to say in a slightly tacky TV advert for TV Times: 'there's so much in it!'

So what about Cheltenham's involvement in its very own internationally-admired music festival?

For starters, on Saturday 4 July, over 100 singers from Cheltenham Bach Choir and Cheltenham Youth Choir will perform in Mahler's gigantic 3rd symphony. It's probably the first ever outing of this magnificent, bucket-list piece in our wonderful but relatively compact Town Hall. Professional symphony orchestras wouldn't squeeze onto the stage (Health & Safety...), but the brilliant young players of Manchester's Chetham's School are up for it. (The choirs will be upstairs).

Earlier that day, also in the Town Hall, Cheltenham Community Gamelan Players will be centre-stage in a concert that celebrates the 10th birthday of our wonderful Javanese gamelan orchestra – housed upstairs in the Pump Room and always available for workshops: [cheltenhamfestivals.com/education/gamelan](http://cheltenhamfestivals.com/education/gamelan)



MEURIG BOWEN

PHOTO: ©MCPHERSONSTEVENS

The Cheltenham Civic Society are presenting four walking tours around town. Each starting at 3pm on 1, 4, 8 and 11 July, they are free and are always oversubscribed!

Cheltenham-based photographer Jim Markland presents a range of his wonderful dance photography in the Pillar Room of the Town Hall. And our Festival Fringe ([cheltenhamfestivals.com/music-fringe](http://cheltenhamfestivals.com/music-fringe)) features a wide range of local performances, from Musica Vera and Cheltenham Symphony Orchestra to Gloucestershire Youth Opera Project's *Acis and Galatea*.

Our Family Day in Imperial Gardens on Saturday 11 July brings together a wide range of local artist offerings – choirs, dancers, swing bands, brass bands, samba, Taiko drummers, Art Playground and a lot more. Check out our website nearer the time for full details.

CHELTENHAM MUSIC FESTIVAL RUNS FROM 30 JUNE – 11 JULY 2015. FIND OUT MORE AT [WWW.CHELTENHAMFESTIVALS.COM](http://WWW.CHELTENHAMFESTIVALS.COM) OR CALL 0844 880 8094



**CHELT  
ENJOY  
HAM** TOWN HALL  
& PITTVILLE  
PUMP ROOM

**CHELTENHAM  
CONCERT SERIES**  
SEPTEMBER 2015 - JUNE 2016

Series  
Tickets  
on sale  
22 June

25 September

Basel Symphony Orchestra

15 October

BBC National Orchestra of Wales

6 November

Orchestra of the Swan

26 November

Oxford Philomusica

3 January

Bournemouth Symphony Orchestra (Matinée)

17 January

Philharmonia Orchestra (Matinée)

19 February

Bournemouth Symphony Orchestra

12 March

BBC National Orchestra of Wales

23 April

Royal Philharmonic Orchestra

25 May

Hallé

15 June

City of Birmingham Symphony  
Orchestra

**0844 576 2210**

[cheltenhamtownhall.org.uk](http://cheltenhamtownhall.org.uk)

THE  
CHELTENHAM  
TRUST