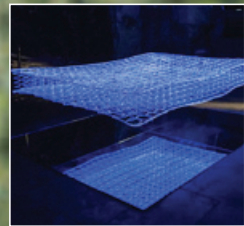


perspectives

CHELTENHAM ARTS CULTURE

Cheltenham Arts Council: awards_funding_publicity_events_listings

Investing in Art
Lights Camera Action
Cheltenham's Brave New
(Art) World
Medicine Unboxed



YOUR WORLD, OUR ART

Contemporary fine art from leading artists exhibited in the heart of Cheltenham



CASTLE
GALLERIES

82a The Promenade, Town Centre
Cheltenham, Gloucestershire, GL50 1NB

E: cheltenham@castlefineart.com
T: 01242 806 807



[@castlegalleries](https://twitter.com/castlegalleries)



[capturedcastle.com](https://www.tumblr.com/capturedcastle)



[facebook.com/castlegalleries](https://www.facebook.com/castlegalleries)

castlegalleries.com

CONTENTS

Watch This (exhibition) Space	2
Encouraging artistic ambition on a grander scale	4
Trafford Grant Short Film	6
Events	7
Did you hear anything?	12
Cheltenham welcomes Ronnie Wood's Raw Instinct	13



The Art of Investing in Art

I hadn't commissioned a PR perspective for Perspectives when I asked Calum Anderson to write about winning the CAC's Trafford Award, but he ended with these words: 'The role of the CAC in aiding young people like myself to pursue artistic endeavors and foster community art projects is invaluable, and I am extraordinarily grateful to the Council and the fund for allowing me to work with such talented individuals in our community to realise my vision.' (See page 6) This is encouraging for the volunteers that make up the CAC, especially since government cuts to Arts funding have meant they have had to punch higher than their weight.

From a purely commercial perspective, Art has long been considered an 'investment of passion' that offers aesthetic utility but increasingly, particularly perhaps in an unstable economic climate, the economic benefits are being recognised too. For most of us, Art is an investment in ourselves, each work offers a new and hopefully mind-expanding perspective on the world and our place in it. A peak at the exhibition in the new picture gallery at the Cheltenham Museum and Art Gallery, promises a new level of rigor and dynamism that will stimulate, provoke and surprise you. (See page 2)

Arts events are designed to stimulate debate and from 23-24 November, Sam Gugliani, Cheltenham's own Renaissance man, promises a star-studded conversation. 'Medicine Unboxed' will use art to challenge received wisdom with dynamic consequences.

And while we are in the business of provoking debate: 'I believe that creativity will be the currency of the 21st century.*' What, *Perspectives* readers, is your perspective on that? KM

*Gerald Gordon, EDA, USA. (1996)

PERSPECTIVES TEAM

EDITOR Katherine McInnes
LISTINGS Alice Hodsdon
TEMPLATE DESIGN Chantal Freeman

COVER: Main image: Lucy Strachan, *god rod*, lucystrachan.co.uk
Photograph © Steve Russell.
Inset images: Gerit Dou, *Self-portrait* (page 2); Beatrice Haines, *Cloud Chamber* (page 4); Chantal Freeman *La Bresse*, Gardens Gallery (see listing on page 7).

The next issues will feature:

WRITTEN WORD – Feb – May issue

MUSIC – June – September issue

Submission (ads and events) six weeks before publication.

Please email event details to perspectives.listings@gmail.com

WATCH THIS (EXHIBITION) SPACE

CHELTENHAM MUSEUM AND ART GALLERY

Cheltenham Museum and Art Gallery have been ‘off the wall and on the move’ since their Lottery Funding success. The gallery staff (who have gone quietly ‘up the wall’ whilst staying firmly put) have continued their work with a singular determination. Building has been happening on both sides of the scaffold, for whilst the beautiful glass and steel, Berman Guedes Stretton-designed exhibition space has been rising from its foundations, Helen Brown has been busy building up the Gallery’s collection.

When I asked local artist PJ Crook to discuss these new acquisitions with Helen for *Perspectives*, I had not realised that the first acquisition would be one of PJ’s own: ‘Portrait of the Artist watching her two children grow’, painted in acrylic in 1996 shown here. ‘I wanted to show not just one time,’ explained PJ, ‘but layers of time.’ Even the painting is about building, building layers, literally, layers of paint (‘each painting is hundreds and thousands of strokes building up areas of light and dark’) and also layers of consciousness (‘memory, subconscious, stories our parents told us ...’) The frame is painted as part of the picture. This is a device to entice the viewer into the painting, the viewer is as important – they weave another layer, bringing stories of their own.’

But it is PJ’s picture ‘A Day at the Races’ (a colourful, quirky painting reminiscent of earlier twentieth century painters, such as Stanley Spencer – both shown here) that will be on show early in the display programme Helen has planned for the new



P J Crook, *Portrait of the artist watching her two children grow*, 1991 (Pictured top); *The smell of the horse, the roar of the crowd*, 2006 (above)

picture gallery. And this is the beauty of our ‘provincial’ museum. They have a Stanley Spencer for you to refer PJ’s picture to, to compare it with, to form your own opinions about inspiration and influence, to learn about the History of Art.

PJ’s jockeys will be shown alongside Gerrit Dou (1645-50) ‘Self Portrait’.

Dou was a Dutch Golden Age painter, pupil of Rembrandt who painted himself around the time that decent mirrors became available. It invites discussion as to the nature of the genre of the self portrait. Is this an accurate ‘photographic’ portrait of Dou as he looked or of the man as he wished he looked? Or was it a business card for potential clients? Art as a barometer not just of human



Gerrit Dou, *Self-Portrait* c.1650

ability but of human ambition, human aspiration.

The dynamism of the new exhibition space inspires daring comparisons. Sharing the new glass and steel space with Dou, are internationally renowned artists, the Cheltenham bred Chapman Brothers. Their picture 'One day you will no longer be loved', acquired in 2011, shows a painted portrait of a lady with the mouth altered to be that of a much older woman. Is this a universal self-portrait, a subtle but unsettling mirror?

Portraiture is just one strand of the collection that PJ and Helen discuss, but where does it stop? What are landscapes but portraits of place? In a recent windfall, a lyrical painting the museum has been chasing for years has just become available so that near to the Chapman's challenge hangs the contrasting rural idyll 'A ploughing match at Northleach', 1831 by Northleach based, self-taught artist, John Miles (1781-1850). The contrast between this and the Chapman's piece indicates that within the gentile confines of Cheltenham, there is a brave new world. KM



Jake and Dinos Chapman, *One day you will no longer be loved (that it should come to this) III*, 2010



Stanley Spencer, *Village Life*, 1940

With thanks to PJ Crook and Helen Brown. (For a comprehensive view of the collection see recently published 'Oil Paintings in Public Ownership in Gloucestershire and Wiltshire' published by The Public Catalogue Foundation. Images by permission, Cheltenham Art Gallery & Museum.

BE PART OF THE BRAND NEW ART GALLERY & MUSEUM

Join the Friends and enjoy exhibition previews, discounts for special exhibitions and in the Art Café, fascinating talks, trips to interesting places, study tours (here and abroad), a prize-winning newsletter and fun social events – all in the company of like-minded friends.



TO JOIN

Pick up a leaflet at Tourist Information or email membership@fcagm.org.uk

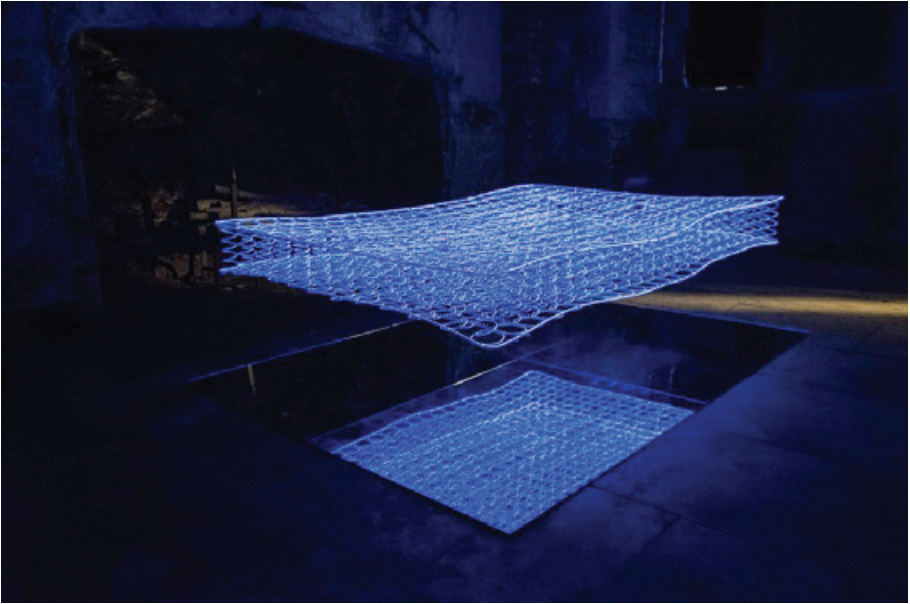


ENCOURAGING ARTISTIC AMBITION ON A GRANDER SCALE

BY STEVE WHITFIELD

The October 6 opening of Cheltenham Art Gallery and Museum's new extension means the people of Cheltenham can look forward to viewing art on a much grander scale from now on. It is fitting that one of the first exhibitions to benefit from the new space is The Open West 13.

Started in Cheltenham, five years ago, the Open West has become a prestigious competition and exhibition. It attracts submissions from contemporary and conceptual artists from around the world, working in a diverse range of media, including: painting, installation, film and sound, textile, photography, ceramics,



Beatrice Haines, *Cloud Chamber*
Site specific installation-steel bedsprings, paint, UV light, 122x191x30 (the Open West 2013)

drawing and print, performance, sculpture, glass, metal and plastics. Its curators and directors, Sarah Goodwin and Lyn Cluer Coleman, have never let the challenges of scale stop them from selecting more ambitious, large-scale installation pieces. The closure of the University's Pittville Campus Summerfield Gallery, in 2011 — home of the competition's exhibition in its first three years — highlighted

the dearth of space in Cheltenham for showcasing such work. The headache of finding a new venue, however, has opened up more imaginative and interesting possibilities, for both the selected artists and the curators. Last year's exhibition was beautifully staged at Gloucester Cathedral, while this year's was seen, earlier in the summer, by large numbers of visitors at the National Trust's Newark Park, Wotton

under Edge. Hosting contemporary art among the art and artefacts of these historical settings has proved to be a big hit with the art-viewing public.

Beyond the undoubted quality of the work itself, what has set The Open West's exhibitions apart, in recent years, has been the thoughtful and playful, site-specific curation. The Open West 2013 exhibition at Cheltenham Art Gallery and Museum promises to be no exception. Even if you've already seen the work at Newark Park, this reprise, running from 12 October to 6 November, will be unique. The work will be exhibited among the gallery's varied permanent and temporary exhibition spaces, projection areas, the roof terrace and within existing collections and will include site-specific installations; while this year's theme of making and materiality will resonate strongly with Cheltenham's important Arts & Crafts collections. This is one exhibition not to be missed.



Lucy Strachan, *Thin Red Line*
11m, reinforced glass fibre, ballast, polypropylene, steel
(the Open West 2012)



Dorcas Casey, *Bull*
170 X 260 x 150 cm, hand stitched fabric, stuffing, polymer clay, old furniture (the Open West 2012)



Caroline Gorick, *Icicle Chandelier*, (the Open West 2013)

The Open West 13 runs from 12 October to 6 November 2013. Eight artists will be giving a series of talks on Saturday 12 October, from 10.30am – 4pm.

TRAFFORD GRANT SHORT FILM

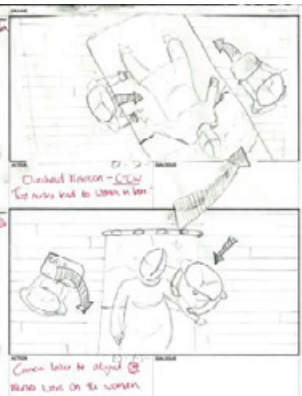
CALUM ANDERSON

Because of the Cheltenham Arts Council's Trafford Grant I have been able to kick start production on a short film adaptation of Kurt Vonnegut's short story '2BR02B'. The film focuses on a potential future wherein population control is a necessity to conserve dwindling supplies, through a policy of 'one in, one out'. The narrative follows a young, soon-to-be father in a hospital waiting room, and explores the

rationality of our never-ending quest for longevity in the face of destructive habits.

The production utilises local talent in Cheltenham in all areas from set design and makeup to costuming and sound mixing. The Grant has given me as a director access to tools that greatly enhance production value, as well as a basis upon which to gather further interest around the project. The cinema scene in Cheltenham is certainly present, but is often overlooked, especially with the Cheltenham Festivals focusing on Music, Science and Literature.

As a student involved particularly in filmmaking, financial backing is often difficult to come by, with the result of sacrifices being made in favor of low production costs. The Trafford Memorial Grant has limited this effect, and facilitates a product that is a calling card for the capabilities of all involved.



At the time of publication the film is still in the production phase, but we'll update you as soon as the final mastered film is completed.



The CAC administers the Trafford Memorial Fund, a bequest for the benefit of local arts organisations, students and young people. Applications in April and October.

For further information please contact Carol Stewart: carolmstewart@btinternet.com

VISUAL ARTS

Exhibition of the works of Sue Wood, Wed 2-Tue 8 Oct, 10am-5pm, free event, Gardens Gallery, Montpellier Gardens, Oils on canvas and mixed media.

(Un)Common Threads: Bob Freeman, Chantal Freeman & Rhys Cowe, Wed 9- Tue 15 Oct, 10am-5pm, free entry at Gardens Gallery. Paintings and printwork, see front cover.

Exhibition of the works of Stephen Belinfante, Wed 16- Tue 22 Oct, 10am-5pm, free event, Gardens Gallery, Paintings, drawing and collages.

Exhibition of the works of CVH James, Wed 23- Tue 29 Oct, 10am-5pm, free event, Gardens Gallery, Oil paintings and mixed media, two year study of Cheltenham, Cotswold villages and coastal scenes.

Exhibition of the works of Cheltenham College of Fine Art, Wed 30 Oct- Tue 5 Nov, 10am-5pm, free event, Gardens Gallery, Paintings, drawings & prints.

Craft Fair, Wed 6- Tue 12 Nov, 10am-5pm, free event, Gardens Gallery, Organised by Cheltenham Art Gallery & Museum.

Another Beastly Art Exhibition - Jane Vernon, Nat Morley, Hazel Morris, Wed 13- Tue 19 Nov, 10am-5pm, free event, Gardens Gallery, Paintings, jewellery, textiles, ceramics, woodcut prints.

Exhibition of the works of Anthea Millier, Wed 20- Tue 26 Nov, 10am-5pm, free event, Gardens Gallery, Mixed media textiles, ceramics, drawings.

Exhibition of the works

of Dan Young, Wed 27 Nov- Tue 3 Dec, 10am-5pm, free event, Gardens Gallery, Digital Landscape - landscape paintings primarily digital finger paintings.

Exhibition of the works of Janet Whitfield, Wed 4- Tue 10 Dec, 10am-5pm, free event, Gardens Gallery, 3 textile artists, potters & mixed media artists.

Exhibition of the works of Mike Coldicott, Wed 11- Tue 17 Dec, 10am-5pm, free event, Gardens Gallery, Fine art photography.

Exhibition of the works of Cathy Haworth, Wed 18- Tue 24 Dec, 10am-5pm, free event, Gardens Gallery, Christmas Exhibition.

MUSIC

Cleeve Harmony Ladies Chorus Rehearsals, Every Tue, 7.45 - 10pm, £3/week (first week free), Bishop's Cleeve Tithe Barn, Details from Cleeveharmony.weebly.com or Donna Whitehouse 07737 280336.

Cheltenham Chamber Orchestra, Sat 28 Sept, 7.30pm, £15 with concessions, St Andrew's Church, Montpellier, Wind concert with music by Raff and Mozart.

Cheltenham Recorded Music Society, Hubert Parry and Charles Villiers Stanford, Tue 1 Oct, 7.30pm, Visitors £2, Bayshill Unitarian Church Hall, With Terence Gilmore-James.

Fine Arts Brass Quintet, Thu 10 Oct, 7.30pm, £10/£8/£5, Parabola Arts

Centre, Contemporary music. 01242 707338.

Cheltenham Opera Society, Agrippina, The Coronation of Poppea, Jason, Sun 13 Oct, 3pm, followed by tea, £5 non-members, St Andrew's Church, Montpellier, Talk by a member of ETO on operas they are to perform in Malvern in Oct.

Holst Birthplace Museum Lecture Recital, Fri 18 Oct, 7.30pm, £10 (members £8), Using Holst's piano, John Wright will play and discuss some of Holst's early works. holstmuseum.org.uk/events.htm

Cheltenham Symphony Orchestra, The Britten Centenary, Sat 19 Oct, 7.30pm, £14, student £7, under 15s free, Tewksbury Abbey, Bernstein: Overture Candide, Britten: National Anthem, Psalm 150, The Young Person's Guide, Spring Symphony. Tickets from the Abbey Shop, alison's bookshop or tel 01684 772272.

Cheltenham Recorded Music Society, The Three Choirs Festival and its mysterious origins, Tue 22 Oct, 2.30pm, Visitors £2, Bayshill Unitarian Church Hall, With Tim Porter.

Jacquin Trio, Mon 4 Nov, 7.30pm, £10/£8/£5, Parabola Arts Centre, Exciting contemporary pieces with clarinet, viola and piano. 01242 707338.

Cheltenham Recorded Music Society, The Russian Romantics, Tue 5 Nov, 2.30pm, Visitors £2, Bayshill Unitarian Church

Events for OCTOBER 2013 – JANUARY 2014

Hall, With Mike Brown, Chepstow U3A.

Charlton Kings Choral Society, Sat 9 Nov, 7.30pm, £15, student £10, Pittville Pump Room, Vivaldi, Monteverdi and more Baroque orchestral pieces. With the Regency Sinfonia, cond. John Wright.

Cheltenham Chamber Orchestra, Sat 9 Nov, 7.30pm, £17 with concessions, St Andrew's Church, Montpellier, Cond. Gavin Sutherland, horn Paul Tomlinson, leader George Ewart. Music by Matthew Curtis, Fauré, Philip Lane, Tom Kane (Horn Concerto), Karl Jenkins and Beethoven.

Cheltenham Opera Society, Lowlights of opera: Basses, Baritones and Mezzos, Sun 10 Nov, 3pm, with tea interval, £5 non-members, St Andrew's Church, Montpellier, Talk by Robert Padgett, Chairman of the Cheltenham Opera Society, with cds and DVDs of arias and duets by some of the best singers of the last 50 years.

Cheltenham Bach Choir, Festival of Britten, Sat 23 Nov, 7.30pm, £25/20 (£10 students), Gloucester Cathedral, St Nicholas Cantata (Britten), Berliner Messe and Cantus in Memoriam Benjamin Britten (Arvo Pärt). Box Office 0845 652 1823 or gloucestercathedral.org.uk

Cotswold Moon: Songs for a November Evening, Sat 30 Nov, 7.30pm, £10, Cheltenham Town Hall, Blue Moon Harmony, Cotswold Male Voice Choir and some of the school's pupils sing in aid of Belmont, a Special School. Tel 0844 576 2210.

Cheltenham Choral Society: Messiah, Handel, Sat 30 Nov,

7.30pm, £15, under 13s free, St Matthew's Church, Clarence Street, Soloists: Dame Felicity Lott, Sophie Dodds, James Brown, Brian Pursey, English Concertante Orchestra. Tickets: Tourist Info or info@cheltchoralsoc.org.uk

Cheltenham Symphony Orchestra, Glos Young Musician, Sat 30 Nov, 7.30pm, £14, Pittville Pump Room, Bizet, Fauré, trad arr.Chapman, saxophone concerto performed by Tomoya Forster (2013 winner), César Franck.

Cheltenham Recorded Music Society "Music and Mince Pies", Tue 3 Dec, 2.30pm, Visitors £2, Bayshill Unitarian Church Hall, Your music choice, CD, tape or record (4 min). Tea and mince pies provided.

Cheltenham Opera Society, Stiffelio (Verdi), Tue 3 Dec, 7pm, wine and mince pies in interval, £5 non-members, St Andrew's Church, Montpellier Street, Dvd of 1993 Met Opera production with Placido Domingo.

Holst Birthplace Museum Victorian Family Christmas, Sat 7 Dec, 10.30am-3pm, £4.50, children free, Christmas greenery, parlour games, and a roaring fire in the cosy kitchen. Celebrate a simpler Christmas in the Victorian way.

Cleeve Chorale Christmas Concert, Sat 7 Dec, 7.30pm, £8, acc. under 16s free, to include refreshments, St Michael & All Angels Church, Bishop's Cleeve, Saint-Saëns' Christmas

Oratorio, seasonal carols and music from the Choir of Bishop's Cleeve Primary Academy.

Cheltenham Choral Society Family Carol Concert, Tue 10 Dec, 7.30pm, £12, under 13s £5, Cheltenham Town Hall, Presenter Matthew Medhurst with Airthrie and Leckhampton Schools. Town Hall Box Office.

Carducci Quartet, Tue 10 Dec, 7.30pm, £10/£8/£5, Parabola Arts Centre, Includes contemporary pieces from McCabe, Williams and Britten. 01242 707338.

Musica Vera: A Whale of a Christmas, Sat 14 Dec, 7pm, All Saints Church, With the choir of CK Junior School. Will include Carols for Choir and Audience and 'Jonah-Man Jazz' (Michael Hurd).

Gotherington Singers' Christmas Concert, Sat 14 Dec, 7.30pm, St Andrew's Church, Montpellier Street.

Cheltenham Bach Choir Carol Concert, Sat 14 Dec, 7.30pm, £10, St Philip & St James' Church, Grafton Road, Conducted by Tim Morris. Profits will go to the Sue Ryder Hospice.

Charlton Kings Choral Society, Handel's Messiah by candlelight, Sat 14 Dec, 7.30pm, St Barnabas Church, Tuffley, With members of the Regency Sinfonia, cond. John Wright.

Jazz on a Christmas Evening, Sat 21 Dec, 7.30pm, £16, Bacon Theatre, Peter Gill and Friends deliver a foot-stomping

Events for OCTOBER 2013 – JANUARY 2014

evening of live music.

Mince pies and mulled wine from 6.30pm.

Cheltenham Recorded

Music Society, Water

Music, Tue 7 Jan, 2.30pm,

Visitors £2, Bayshill

Unitarian Church Hall,

With Richard Smith.

Rustic Quintet, Tue 14 Jan,

7.30pm, £10/£8/£5, Parabola

Arts Centre, Contemporary

wind pieces including

Tomasi, Tuomela, Mathias

and Ligeti. 01242 707338.

Cheltenham Philharmonic

Orchestra, Sun 26 Jan,

3pm, Pittville Pump

Room, Overture from

Candide: Bernstein,

Trumpet Concerto:

Tomasi, Chairman Dances:

Adams, Symphony No.9:

Shostakovich.

Cheltenham Bach Choir

Choral Workshop, Sat 1

Feb, 10am-4pm, £15, Christ

Church Hall, Malvern Road,

Tuition partly focused on

the Rachmaninov Vespers.

Get to know the pleasures

of a demanding repertoire:

the choir is keen to recruit.

Info: cheltenhambachchoir.

org.uk

Cheltenham Symphony

Orchestra, Sat 1 Feb,

7.30pm, Pittville Pump

Room, Mozart Overture to

the Magic Flute, Beethoven

Violin Concerto (soloist

Tamsin Waley-Cohen),

Dvorak Symphony No.8.

STAGE & SCREEN

Cheltenham Operatic & Dramatic Society: Avenue

Q, Sat 28 Sept- Sat 5 Oct,

7.45pm, 2.30pm matinee Sat

5th, £14, Playhouse Theatre,

Box Office 01242 522852.

Pre-auditions for Alan

Bennett's version of 'Wind

in the Willows', Early Oct,

Details tbc, please see

codsonline.co.uk

Pocket Merchant of Venice,

Fri 4 Oct, 2.30pm & 7.30pm,

£12/£10, Parabola Arts

Centre, Box Office 01242

707338.

Kathakali Dance: Kala

Chethena, Mon 14-Tue 15

Oct, 7pm Mon, 2pm Tue,

£15/£10, Parabola Arts

Centre, Classical dance

drama of Kerala. Box Office

01242 707338.

Unmythable, Tue 22 Oct,

7pm, £10/£8/£5, Parabola

Arts Centre, One show.

Three actors. All the Greek

myths. Box Office 01242

707338.

Back to Broadway, Fri

25 Oct, 7.30pm, £16 (£14),

Bacon Theatre, Celebrating

the best of musical theatre

with 30 well loved tunes,

narrated by Tupele Dorgu.

A Viking Tale, Sat 2 Nov,

2.30pm, £10 (£7.50) Family

£30, Bacon Theatre, SOOP

Theatre weave the magical

tale of Sigurd, the greatest

Viking of them all. For

brave adventurers aged 9+.

Limehouse Lizzy, Fri 8

Nov, 8pm, £15 (£14), Bacon

Theatre, An action packed

show, keeping the spirit

of Celtic rock icon Philip

Lynott and Thin Lizzy alive.

Snow White, Vienna

Festival Ballet, Sat 9 Nov,

7.30pm, £17- £13, Bacon

Theatre, A brand new

production of this timeless

fairytale.

Othello: Icarus Theatre

Collective, Thu 14 Nov,

7.30pm, £16 (£14), Bacon

Theatre, Shakespeare's

vibrant language brought to life by the cast and a live string quartet.

Indian Takeaway with

Hardeep Singh Kohli, Sat

16 Nov, 7.30pm, £16 (£14),

Bacon Theatre, A hilarious

evening of anecdotes and

cooking live on stage.

Cotswold Savoyards: Jekyll

& Hyde the Musical, Mon

25- Sat 30 Nov, 7.30pm

& 2pm Sat matinee, £14,

Playhouse Theatre, Box

Office 01242 522852.

The Very Snowy

Christmas, Tue 3 Dec,

10.30am, £8.50 (£7.50)

Family £30, Bacon Theatre,

Blunderbus Theatre

Company present a magical

winter's tale. Suitable for 3+.

Pre-audition rehearsals for

Cotswold Savoyards' 100th

show, The Mikado, Thu

5 Dec, 7.30pm, Charlton

Kings Infants' School, More

info: anncoxgran@yahoo.

co.uk

Janet Marshall Dance

Studios Christmas Show,

Thu 12- Sat 14 Dec, 7pm

(Sat mat 2.30pm), £10 (£8),

Bacon Theatre

Film: Tinkerbell and the

Secret of the Wings [U],

Wed 18 Dec, Film 5pm,

£6.50, Bacon Theatre, Arrive

in fancy dress from 4pm to

meet Santa then watch the

Disney animation. Tickets

include a treat.

All on a Winter's Night

with Johnny Coppin,

Thu 19 Dec, 7.30pm,

£16- £9, Bacon Theatre,

A mix of carols, new

songs, humorous readings

and folklore. Includes

seasonal images by local

photographer Martin Fry.

Events for OCTOBER 2013 – JANUARY 2014

Robin Hood, Promenade Productions' traditional family panto, Wed 22- Sun 26 Jan, 7pm Wed-Sat, 2.30pm Sat-Sun, £8- £14, Bacon Theatre, Box Office & info: 01242 224144.

LECTURES & MEETINGS

Cheltenham German Club
Konversationsabende, Thursdays, 7.30pm, Town centre, More info: cheltenhamgermanclub.webs.com or contact Jo Dean 01242 245349 robertandjodean@virginmedia.com

WEA: Watermills, Windmills & Cliff Railways, Mon 7 Oct-Mon 18 Nov (ex 28 Oct), 2-4pm, £48, Christ Church Hall, Malvern Road. With Michael Turner. Derek Briggs 01242 234488, wea-cheltenham.co.uk

Cheltenham Civic Society, Christ Church: a microcosm of socio/religious changes in the C.19th, Tue 8 Oct, 7.30pm, £2, £4 non-members, Parmoor House, Lypiatt Terrace, Talk: Roger Brown.

Cheltenham German Club, Germans across Europe, Fri 11 Oct, 7.30pm, Parmoor House, Lypiatt Terrace, With Simon Winder. Talk, in English, by the author of 'Germania' and 'The Habsburgs'. Info: cheltenhamgermanclub.webs.com or Jo Dean 01242 245349 robertandjodean@virginmedia.com

Cercle Français, Chansons engagées, Mon 14 Oct, 7.30pm, £3 non-members, Church House, Painswick Road, With Tony Callen cercle-francais-cheltenham.

webs.com
Cheltenham Italian Society, Bathing in the Roman Empire, Mon 14 Oct, 7.30pm, Visitors £2, Parmoor House, Lypiatt Terrace, With Stephen Clews, Roman Baths & Pump Room Manager, Bath. In English.

Cheltenham Poetry Society Poetry Reading Group Meeting, Tue 15 Oct, 7-10pm, £2, Parmoor House, Lypiatt Terrace, info: Sharon Larkin 07540 329389.

Cheltenham Local History Society, Bristol Suffragettes and Cheltenham Ladies, Tue 15 Oct, 7.30pm, £1 non-members, Municipal Offices, Promenade, With Lucienne Boyce.

Cheltenham WEA Walking Book Group, Wed 16 Oct, 2-4pm, A gentle walk whilst discussing Zadie Smith's 'NW'. See wea-cheltenham.co.uk or phone 01242 524621 for info.

Leckhampton LHS, Special General Meeting to discuss the Society's future, Thu 17 Oct, 8pm, Church House, Painswick Road.

Charlton Kings LHS, Ornamental Ironwork, Tue 22 Oct, 7.30pm, Baptist Church, Church St, Charlton Kings, With Geoff North.

Cercle Français, Bertrand Du Guesclin, Connétable de France, Mon 28 Oct, 7.30pm, £3 non-members, Church House, Painswick Road, With Guy Richeux.

Wild About Animals with Andy Rouse, Fri 1 Nov, 7.30pm, £15 (£13.50), Bacon Theatre, The wildlife

photographer presents stories, musical pieces, anecdotes and of course awe-inspiring images.

Cheltenham Poetry Society Poetry Workshop, Tue 5 Nov, 7-10pm, £4 (£2 subscribers), Parmoor House, Lypiatt Terrace, Further info: Sharon Larkin 07540 329389.

Cercle Français, Les Misérables: Hugo et Dickens, Mon 11 Nov, 7.30pm, £3 non-members, Church House, Painswick Road, With Jean-Claude Vignaud.

Cheltenham Italian Society, Antonio Pigafetta navigatore, geografo e scrittore italiano, Mon 11 Nov, 7.30pm, Visitors £2, Parmoor House, Lypiatt Terrace, Relazione del primo viaggio intorno al mondo. With Paolo Detassis, Dante Alighieri Society. In Italian.

Cheltenham Civic Society: Civic Pride Report, Tue 12 Nov, 7.30pm, £2, £4 non-members, Parmoor House, Lypiatt Terrace, Jeremy Williamson, Managing Director, Cheltenham Development Task Force, with an update on current town centre projects.

Cheltenham German Club, Mehrsprachigkeit in Schleswig-Holstein, Fri 15 Nov, 7.30pm, Parmoor House, Lypiatt Terrace, Zur Rolle von Sprache im Nationalkonflikt im 19. Jahrhundert, Dr Nils Langer. Info: cheltenhamgermanclub.webs.com or Jo Dean 01242 245349 robertandjodean@virginmedia.com

Events for OCTOBER 2013 – JANUARY 2014

Cheltenham Poetry Society Poetry Reading Group

Meeting, Tue 19 Nov, 7-10pm, £2, Parmoor House, Lypiatt Terrace, Further info: Sharon Larkin 07540 329389.

Cheltenham Local History Society, The Turnpikes and the Improvement of the

Roads, Tue 19 Nov, 7.30pm, £1 non-members, Municipal Offices, Promenade, With Dr Nicholas Herbert.

Leckhampton LHS, Ian Hollingsbee: PoW Camps and Hostels in Glos.,

1939-48, Thu 21 Nov, 8pm, Visitors £1, Church House, Painswick Road

Medicine Unboxed 2013:

Voice, Sat 23- Sun 24 Nov, £75/£40, Parabola Arts Centre, Two days of ideas, explorations and debates about medicine, the arts, philosophy and imagination.

Cercle Français, Mayotte, un département d'Outre

Mer dans les Comores, Mon 25 Nov, 7.30pm, £3 non-members, Church House, Painswick Road, With Cédric Cabanne.

Cheltenham Poetry Society AGM & short Writing

Group Meeting, Tue 26 Nov, 7-10pm, £2, Parmoor House, Lypiatt Terrace, Further info: Sharon Larkin 07540 329389.

Charlton Kings LHS, An Introduction to Heraldry,

Tue 26 Nov, 7.30pm, Baptist Church, Church St, Charlton Kings, With John Bromley.

Cheltenham Camera Club hosts Eamonn McCabe: A life in Pictures, Thu 28 Nov, 7.45pm, £10, Pittville Pump

Room, Author, 4x Sports Photographer of the Year and celebrated Guardian Picture Editor, recalling his lifetime in pictures

Cheltenham German Club, Wagner 200: seine

Politik, sein Einfluss – und seine Musik, Fri 29 Nov, 7.30pm, Parmoor House, Lypiatt Terrace, Prof Helmut Hubel. Info: cheltenhamgermanclub.webs.com or Jo Dean 01242 245349 robertandjodean@virginmedia.com

WEA Day School, Winter Solstice: a Feast of Poetry,

Sat 30 Nov, 10am-4pm, £25, Christ Church Hall, Bring a packed lunch. Enq: Derek Briggs 01242 234488, wea-cheltenham.co.uk

Cheltenham Poetry Society Poetry Workshop,

Tue 3 Dec, 7-10pm, £4 (£2 subscribers), Parmoor House, Lypiatt Terrace, Further info: Sharon Larkin 07540 329389.

Cheltenham Civic Society, Paterson Memorial**Lecture: Bringing Historic Properties to Life**, Tue 3

Dec, 7.30pm, £5 (inc. glass of wine), Christ Church, Malvern Road, With Sarah Staniforth, Dir. Museums and Collections, National Trust.

Cercle Français, Soirée amicale, Mon 9 Dec,

7.30pm, Church House, Painswick Road

Cheltenham Italian

Society, The Genius of Verdi, Mon 9 Dec, 7.30pm, Visitors £2, Parmoor House, Lypiatt Terrace, In Verdi's 200th Anniversary year William Bell introduces favourite recordings of

the composer's music. In English.

Cheltenham Local History Society, The Legacy of

Edward Jenner, Tue 10 Dec, 7.30pm, £1 non-members, Municipal Offices, Promenade, With Prof. Gareth Williams.

Cheltenham German Club Weihnachtsfeier,

Fri 13 Dec, 7.30pm, Parmoor House, Lypiatt Terrace, Buffet, Quiz, Tombola, Lieder, usw. Info: cheltenhamgermanclub.

webs.com or Jo Dean 01242 245349 robertandjodean@virginmedia.com.

Leckhampton LHS, Dr Anthea Jones:**Individuality and Integration: Leckhampton and Cheltenham**, Thu

19 Dec, 8pm, Visitors £1, Church House, Painswick Road.

Cheltenham Poetry Society Poetry Workshop,

Tue 7 Jan, 7-10pm, £4 (£2 subscribers), Parmoor House, Lypiatt Terrace, Further info: Sharon Larkin 07540 329389.

WEA: The Renaissance of English Music, Mon 13 Jan- Mon 2 Feb, 10.30am-12.30pm, £40, Christ Church Hall, With Steve Hill. Enq: Derek Briggs 01242 234488, wea-cheltenham.co.uk

WEA: Advanced

Calligraphy, Tue 14 Jan- Tue 1 Apr (ex 18 Feb), 9.30am- 12.30pm, £126, Southam Village Hall, With Josie Brown. See above for contact details.

WEA: Further Your French with Fun, Thu 16 Jan- Thu 27 Mar (ex 18 Feb), 2.15-4.15pm, £72, Christ Church

Events for OCTOBER 2013 – JANUARY 2014

Hall, With Annette Bins.
See two above for contact details.

Leckhampton LHS, Aylwin Sampson: Cheltenham Worthies, Thu 16 Jan, 8pm, Visitors £1, Church House, Painswick Road.

Cheltenham German Club, Deutschland und seine Kolonien, Fri 17 Jan, 7.30pm, Parmoor House, Lypiatt Terrace, Susanne Hauser-Braun. Info: cheltenhamgermanclub.webs.com or Jo Dean 01242 245349 robertandjodean@virginmedia.com.

Cercle Français, Une cité belge sur la Tamise, Mon 20 Jan, 7.30pm, £3 non-members, Church House, Painswick Road, with David King.

Cheltenham Poetry Society Poetry Reading Group Meeting, Tue 21 Jan, 7-10pm, £2, Parmoor House, Lypiatt Terrace, Further info: Sharon Larkin 07540 329389.

Cheltenham Local History Society, Research and Display Evening, Tue 21 Jan, 7.30pm, £1 non-members, Municipal Offices, Promenade.

WEA: Reading Paintings: the Shock of the New, Tue 21 Jan- Tue 18 Mar (ex 18 Feb), 10.30am- 12.30pm, £64, Christ Church Hall, With Dr Allan Phillipson. Enq: Derek Briggs 01242 234488, wea-cheltenham.co.uk

WEA: China pre-1300, Fri 24 Jan- Fri 14 Mar, 11am-1pm, £64, Christ Church

Hall, With Charles Tyzack.
See above for contact details.

Charlton Kings LHS, Edward A. Wilson: His life in Cheltenham, Tue 28 Jan, 7.30pm, Baptist Church, Church St, Charlton Kings, With David Elder.

WEA: Italian for Beginners, Tue 28 Jan- Tue 11 Mar (ex 18 Feb), 2.30-4.30pm, £48, Christ Church Hall, With Rossella Rigatieri. Enq: Derek Briggs 01242 234488, wea-cheltenham.co.uk.

WEA: Intermediate Italian, Thu 30 Jan- Thu 27 Mar (ex 20 Feb), 11am-1pm, £64, Christ Church Hall, With Rossella Rigatieri. See above for contact details.

DID YOU HEAR ANYTHING?

SAM GUGLANI ON MEDICINE UNBOXED 2013

This same question at the bedside or in clinic, voiced from doctor to doctor – stethoscope pressed firmly to skin, ears straining for heart sounds, breath sounds, any sounds. What we're actually asking is: Did you hear anything wrong? A sensible question, given the terrain – but in pursuit of this narrow range of sounds, might we miss the resonant complexity of medicine's voice – hospitals and GP practices burgeoning with the sounds of fear and hope like tuning orchestras, or a patient's words tentative like fingers at a cello. Listen now, what are they saying?

This year Medicine Unboxed gathers around the idea of VOICE – the patient's, the health professional's, the hallucinated and asserted, the fearful, sung, faulted, questioning and resonant. The voices of science, philosophy, music and poetry.

And the faltering but insistent voice of the NHS. Our speakers include Sir Andrew Motion, Jackie Kay, Stephen Grosz, Richard Bentall, Jenny Diski, Bobby Baker, Lionel Shriver, Jocelyn Pook, Gabriel Weston, Bob Heath and Jo Shapcott.

Medicine Unboxed explores a view of medicine that exceeds the technical – one demanding moral consideration, care of the individual patient and genuine political debate around medicine's goals and society's values. We see the arts as elaborating this view and through a series of inspiring and challenging events, engage health professionals and the general public together in a conversation around twenty-first century medicine.

Come along, join the debate – be inspired.

CHELTENHAM WELCOMES RONNIE WOOD'S RAW INSTINCT

A COLLECTION OF ART BY A LIVING LEGEND OF ROCK

From 12-27 October, Castle Fine Art, Cheltenham will be hosting Raw Instinct, a collection of art by rock icon Ronnie Wood.

Comprising original works of art, hand-written song lyrics and hand-painted guitars used by Wood, the Raw Instinct exhibition provides a unique insight into the world of Ronnie Wood and The Rolling Stones themselves.

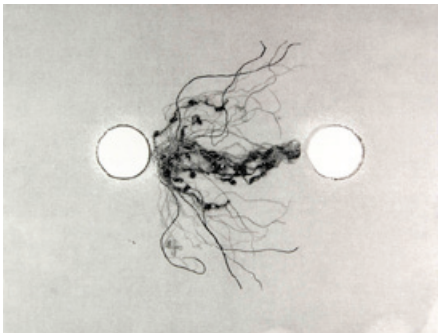
John Stokes, Castle Fine Art, Cheltenham's gallery manager, said: "Raw Instinct is a stunning and exciting collection that any of the band's fans will love. However, Ronnie Wood's art background shines throughout his work, so there is something for everyone to enjoy. It's great news that we can share his work with local people on their doorstep."

Raw Instinct features distinguished portraits of Mick Jagger, Charlie Watts and

Keith Richards, alongside paintings and sketches of family, friends, written words and colourful landscapes.

The exhibition is free of charge to view and Castle Fine Art, Cheltenham is open between 10.30am and 6.30pm, Monday to Friday, 9.30am-6.30pm on Saturday and Sunday 11.00am-5.00pm.

Castle Fine Art, Cheltenham can be found on The Promenade or contacted by calling 01242 806 807



Susan Aldworth, *Out of Body*, Medicine Unboxed 2013
Susan is represented by GV Art.

Medicine Unboxed: VOICE

Takes place on 23-24 November 2013
at Parabola Arts Centre, Cheltenham.

medicineunboxed.com

medicine unboxed

VOICE

23-24 NOVEMBER 2013
PARABOLA ARTS CENTRE CHELTENHAM

GABRIEL WESTON EDUARDO MIRANDA ROGER TAYLOR JENNY O'BEIRNE DEBORAH BOWMAN MESCHOR
JULIAN BAGGINI ANDREW WITTON FLOLAZER JO SHAPCOTT RICHARD BENTALL CHARLOTTE BEASE
CHARLES FERRISBOGH ELEANOR LONGDEN BOB HIGHT RICHARD TALLEY JACQUE SOK IRLAINE PAPERMAN
JOCelyn POOK RHOY MORGAN ALYSSAN POLLOCK BOBBY BAKER ROGER KNEEBONE LINDA SHAWER

WITH TOMA GAZDAR WITH PETER THOMAS WITH JO SHAPCOTT WITH ANNA WATKINS & FRANK COLLINS
WITH THE SHELTON FOUNDATION WITH THE CHELTENHAM ARTS COUNCIL WITH THE CHELTENHAM ARTS COUNCIL
WITH THE WELLS FOUNDATION WITH THE WELLS FOUNDATION WITH THE WELLS FOUNDATION WITH THE WELLS FOUNDATION

MEDICINEUNBOXED.COM

sponsored by

**CHELT
EN
HAM** TOWN HALL
& PITTVILLE
PUMP ROOM

Cheltenham Concert Series

2013-14

Bournemouth Symphony Orchestra

30 October 2013

Holst, Elgar & Brahms

Oxford Philomusica

28 November 2013

Beethoven

Bournemouth Symphony Orchestra

30 January 2014

Mozart & Beethoven

BBC National Orchestra of Wales

20 February 2014

Bartók, Barber & Mozart

The Hallé

7 March 2014

Beethoven, Mazrt, Vaughan Williams

& Sibelius

Orchestra of the Swan

28 March 2014

Britten, Elgar & Vaughan Williams

Royal Philharmonic Orchestra

25 May 2014

Wagner, Beethoven, Dvořák

0844 576 2210

cheltenhamtownhall.org.uk

The Art of Live Music

Pictured: Tamsin Waley-Cohen ~ Orchestra of the Swan